



---

RAPID DOOR  
**VertiGO** Green

**Rapid door for agricultural environments**

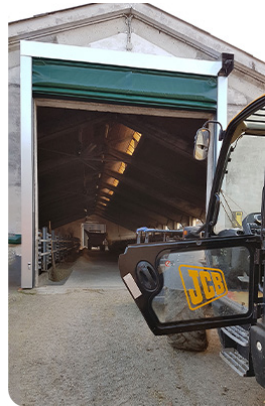
---



# What is it?

A rapid door with a robust structure to control climate, dust and insects in agricultural environments. Ideal for all those companies that need to protect vehicles, animals and plants.

Fabric › Woven fabric in breathable PVC  
Wind resistance › Class 2 / 3 / 4



# Main features

## Impact resistant

The Green rapid fold-up doors feature increased horizontal steel bars that guarantee greater resistance to impact, caused by the passage of agricultural vehicles or the transit of animals inside stables and farms.

## For your climate

This special version can be equipped with both breathable and translucent PVC covering. These two options can favor both natural ventilation to ventilate a spoiled air environment and enhance the luminance of the building.

# Anti-insect

Vertigo Green's PVC anti-insect cover has been designed to effectively repel the entry of insects into farm buildings, where flies, mosquitoes and grasshoppers are harmful to the welfare of plants and animals, continuing to unquestionably allow the passage of air.

A fold-up door designed specifically for stables, greenhouses and crops.



Features

**Shock-resistant**  
**Climate-controlled**  
**Air and light**  
**Insect protection**

---

Used mainly to

**Stables**  
**Greenhouses**  
**Crops**

Recommended  
for

**Composting**  
**Chemistry ATEX**

[Discover other fields ↗](#)



# Safe passage

The Vertigo Green rapid door enable safe and controlled automation at all times, both for the passage of heavy vehicles and livestock and the same door\*.

\* the Green fold-up door has been developed in an oversized form compared to the Vertigo base range, to allow a higher resistance to impacts that may come from the transit of agricultural vehicles and animals.

## Related to weather conditions

The rapid door can also be equipped with a climate control unit to regulate the movement of the mantle in the rooms where crop actions develop, such as: agricultural warehouses, nurseries and greenhouses.



## A smart control unit

Depending on the weather conditions, the door can be opened automatically, always in relation to the signals coming from the external sensors installed.

These signals may, for example, be linked to weather stations or air quality sensors that can measure wind force and direction, external temperatures, precipitation, humidity and CO<sub>2</sub> values of indoor air.

**This particular method of climate control by means of a control unit is optimal in greenhouse crops such as horticulture, floriculture, nursery and fruit growing.**

**In winter farmers often use the natural ventilation system, however in warmer periods this cooling method may not be sufficient to ensure the welfare of their animals.**

In combination with the internal AHU, the breathable PVC coating of Vertigo Green promotes the development of an ideal microclimate for better stable management, especially in summer.





# For the welfare of animals.

The fabric in breathable PVC protects the cattle from the cold winds of the North, gradually penetrating the sunlight coming from the East. The animals will thus be destined for a productive environment warm in winter and cool in summer.

In addition, the fabric in breathable PVC promotes excellent air recirculation, Key Element to maintain the high level of air quality breathed by the animal and, consequently, their productive performance.

# Bugs? No thanks!

**The special anti-insect fabric of Vertigo Green has repellent properties to protect greenhouses and crops from insects that can ruin the crop or undermine the health of the animal inside stables and farms.**

\* the Green version of the Vertigo fold-up doors ensures high levels of biosecurity in agricultural buildings while minimizing the risk of proliferation of animal diseases and pandemics of plant parasites.



# What about plant health?

Protected crops can ensure climate control, cultivation in environments other than those of origin and even anticipate/delay production or produce out of season.

To ensure this, it is necessary to separate the rooms by means of special quick-winding sealing closures that, by means of special rows of portholes, in combination with artificial lights in the greenhouse, promote the correct passage of sunlight for a better development of the crop.

## QUESTION

1. A company has a net income of \$100,000 and a tax rate of 30%. What is the company's taxable income?
A. \$130,000
B. \$100,000
C. \$70,000
D. \$170,000

## ANSWER

1. A company has a net income of \$100,000 and a tax rate of 30%. What is the company's taxable income?
C. \$70,000
Explanation: Taxable income is calculated as net income divided by (1 - tax rate). In this case, \$100,000 / (1 - 0.30) = \$142,857. However, the correct answer is C, which suggests a different interpretation or a typo in the question.

2. A company has a net income of \$100,000 and a tax rate of 30%. What is the company's taxable income?

A. \$130,000

B. \$100,000

C. \$70,000

## QUESTION

1. A company has a net income of \$100,000 and a tax rate of 30%. What is the company's taxable income?

A. \$130,000
B. \$100,000
C. \$70,000
D. \$170,000

2. A company has a net income of \$100,000 and a tax rate of 30%. What is the company's taxable income?

A. \$130,000

B. \$100,000

C. \$70,000

D. \$170,000

3. A company has a net income of \$100,000 and a tax rate of 30%. What is the company's taxable income?

A. \$130,000

B. \$100,000

C. \$70,000

D. \$170,000

4. A company has a net income of \$100,000 and a tax rate of 30%. What is the company's taxable income?

A. \$130,000

B. \$100,000

C. \$70,000

D. \$170,000

5. A company has a net income of \$100,000 and a tax rate of 30%. What is the company's taxable income?

## Color palette

White

Light gray

Dark gray

Black

Blue



Black

Light gray

Dark gray

Blue

Dark green

Light gray



Black

Black

Black

Black

Black

Black

Color palette



Black

Black

Black

Black

Black

Black



Black

Black

Black

Black

Black

Black

**Account**

Register to download brochure and dwg **complete**

PLAN



Enter the GLG world

# Register now

Join our community  
by registering on our portal for  
access a number of features  
useful for your future purchases.

[www.glgdoors.com](http://www.glgdoors.com)

