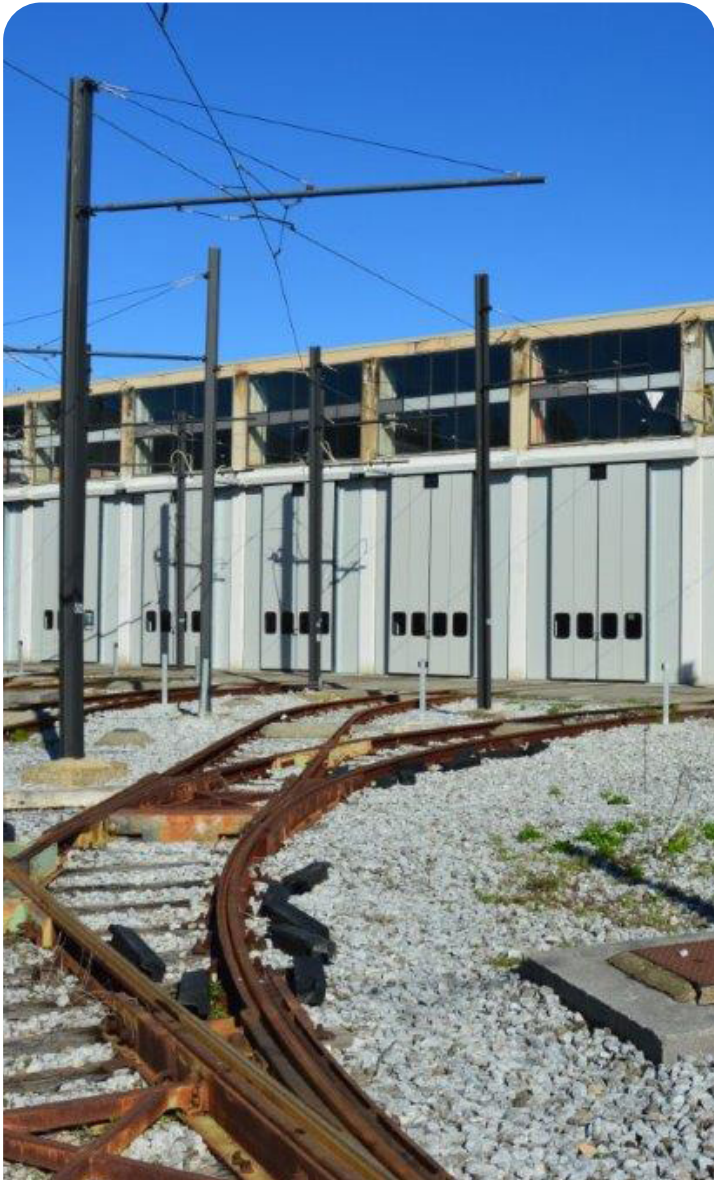




INDUSTRIAL
Folding doors

Safety and versatility together.



A rigid, ultra insulating solution.

The GLG folding doors are built with sandwich panels in painted steel or aluminum, with an injection of CFC-free polyurethane foam to ensure even more efficient insulation.

Overview [↗](#)

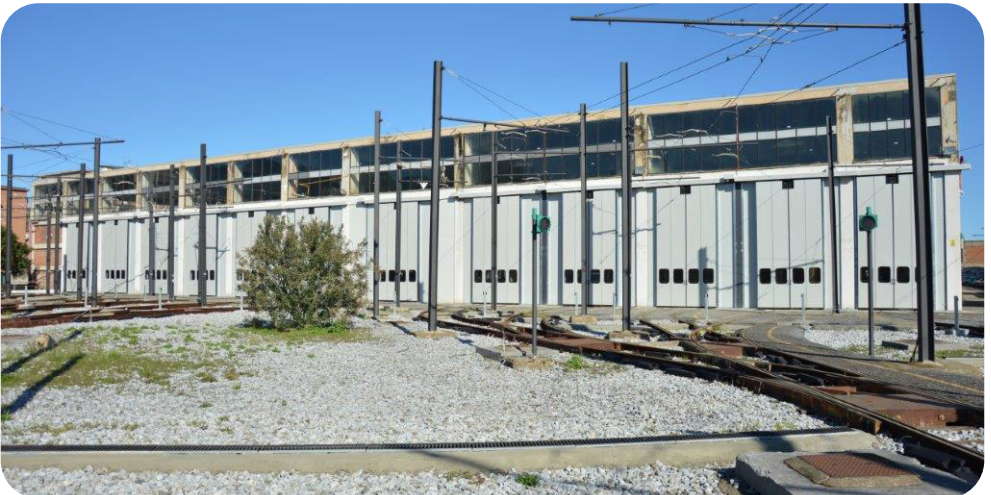


Features

- 100% safe**
- Wear-free**
- Possibility to close large spaces**
- Functionality and lightness**
- Quick assembly**
- Small footprint**
- Reduced maintenance**
- Thermal insulation**
- Sound insulation**

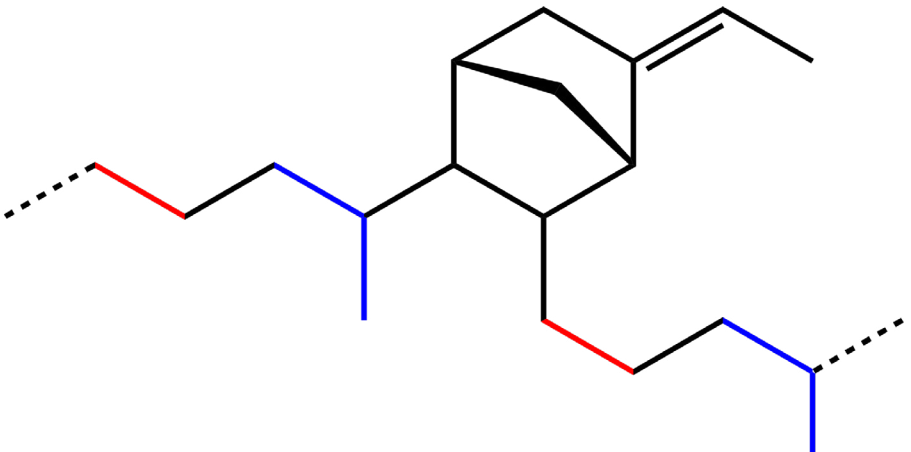
Applications

- Transportation**
- Logistics**
- Agribusiness**
- Shipyards**
- Railroads**
- Airports**



Ultra safe and lightweight

They guarantee maximum thermal and acoustic insulation, while special EPDM seals and nylon brushes on the closing profiles ensure a perfect seal.



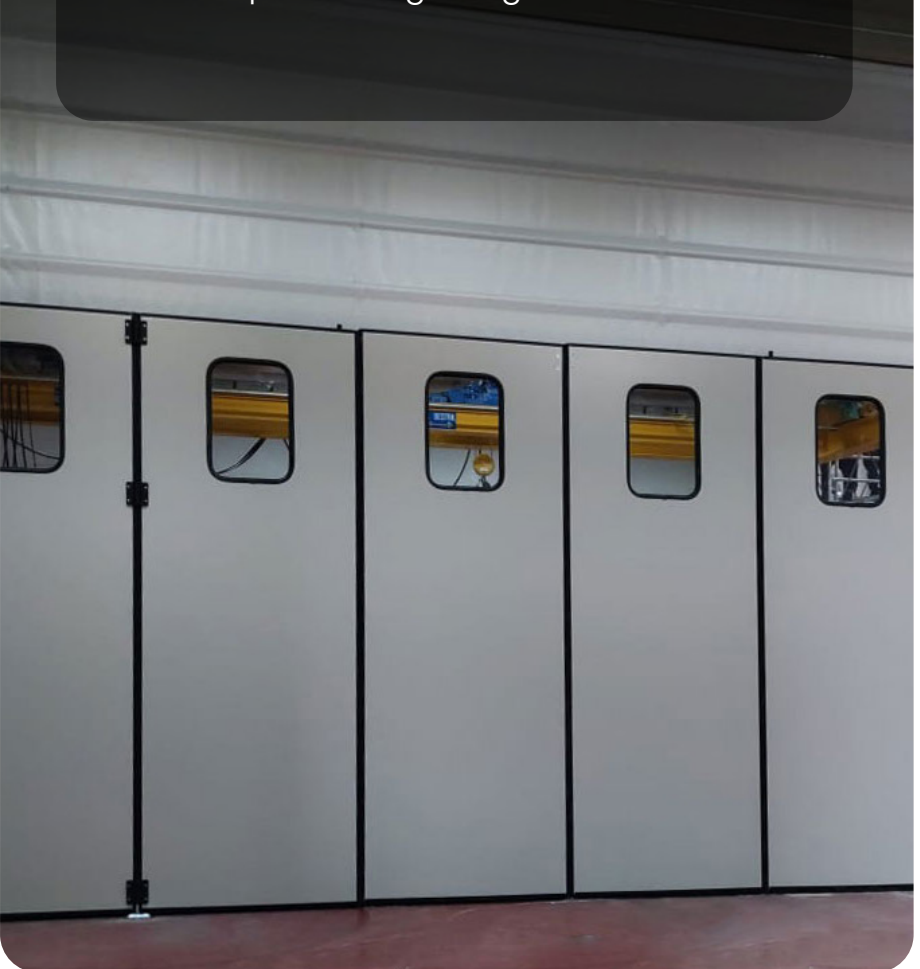
Different possibilities of customization

Portholes, ventilation grilles and special windows, designed and customized hinges, pedestrian doors with the function of emergency exits or to facilitate frequent passage without opening the door if not strictly necessary.

For a better view

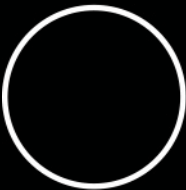
We make portholes of different shapes and sizes according to the needs of use of its industrial door.

- Square and rectangular portholes with black EPDM rubber seal with rounded corners
- Circular portholes with black EPDM rubber seal
- Square and rectangular portholes with aluminium profile at right angles



All the doors you want

The classic type for the book door without floor guide is 2+2, that is two doors that open on one side and two that open on the other. The maximum number of doors per side is 4 and you can pair all the possibilities.

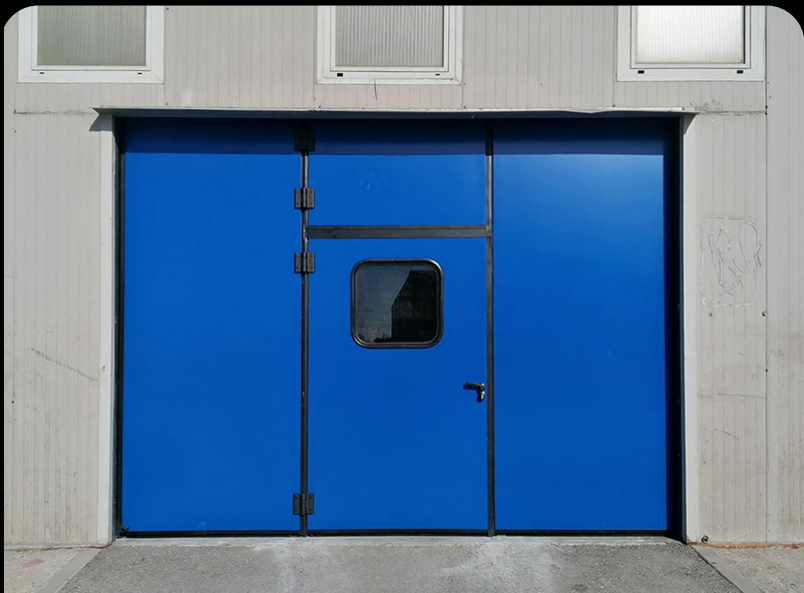


An additional entrance

Pedestrian pedestrian

On request, it is possible to have a door cut with the aluminium top stop profile, equipped with a 2-point anti-panic handle (high and low), with cylinder and external handle.

The pedestrian door is a practical solution to access quickly, without where to open the entire door all the time.



Folding doors are packed according to your space requirements. This allows the closure of very large compartments with a minimal lateral footprint.



QUESTION

1. A company has a net income of \$100,000 and a tax rate of 30%. What is the company's taxable income?
A. \$130,000
B. \$100,000
C. \$70,000
D. \$170,000

ANSWER

1. A company has a net income of \$100,000 and a tax rate of 30%. What is the company's taxable income?	C. \$70,000
	Explanation: Taxable income is calculated as net income divided by (1 - tax rate). In this case, \$100,000 / (1 - 0.30) = \$142,857. However, the correct answer is C, which suggests a different interpretation or a typo in the question.

2. A company has a net income of \$100,000 and a tax rate of 30%. What is the company's taxable income?	C. \$70,000
---	-------------

3. A company has a net income of \$100,000 and a tax rate of 30%. What is the company's taxable income?	C. \$70,000
---	-------------

4. A company has a net income of \$100,000 and a tax rate of 30%. What is the company's taxable income?	C. \$70,000
---	-------------

QUESTION

1. A company has a net income of \$100,000 and a tax rate of 30%. What is the company's taxable income?

ANSWER

1. A company has a net income of \$100,000 and a tax rate of 30%. What is the company's taxable income?	C. \$70,000
	Explanation: Taxable income is calculated as net income divided by (1 - tax rate). In this case, \$100,000 / (1 - 0.30) = \$142,857. However, the correct answer is C, which suggests a different interpretation or a typo in the question.

2. A company has a net income of \$100,000 and a tax rate of 30%. What is the company's taxable income?	C. \$70,000
---	-------------

3. A company has a net income of \$100,000 and a tax rate of 30%. What is the company's taxable income?	C. \$70,000
---	-------------

4. A company has a net income of \$100,000 and a tax rate of 30%. What is the company's taxable income?	C. \$70,000
---	-------------

5. A company has a net income of \$100,000 and a tax rate of 30%. What is the company's taxable income?	C. \$70,000
---	-------------

6. A company has a net income of \$100,000 and a tax rate of 30%. What is the company's taxable income?	C. \$70,000
---	-------------

7. A company has a net income of \$100,000 and a tax rate of 30%. What is the company's taxable income?	C. \$70,000
---	-------------

QUESTION

1. A company has a net income of \$100,000 and a tax rate of 30%. What is the company's taxable income?

2. A company has a net income of \$100,000 and a tax rate of 30%. What is the company's taxable income?

3. A company has a net income of \$100,000 and a tax rate of 30%. What is the company's taxable income?

4. A company has a net income of \$100,000 and a tax rate of 30%. What is the company's taxable income?

5. A company has a net income of \$100,000 and a tax rate of 30%. What is the company's taxable income?

6. A company has a net income of \$100,000 and a tax rate of 30%. What is the company's taxable income?

7. A company has a net income of \$100,000 and a tax rate of 30%. What is the company's taxable income?

8. A company has a net income of \$100,000 and a tax rate of 30%. What is the company's taxable income?

9. A company has a net income of \$100,000 and a tax rate of 30%. What is the company's taxable income?

10. A company has a net income of \$100,000 and a tax rate of 30%. What is the company's taxable income?
--



Technical drawing labels:

- H. door
- H. opening
- L. transparent view
- H. permanent view
- H. height
- D. upright
- W. upright
- W. total
- H. control
- H. lock
- L. crossbar
- W. case

G Account

Register to download brochure and dwg **complete**

PLAN



Enter the GLG world

Register now

Join our community
by registering on our portal for
access a number of features
useful for your future purchases.

www.glgdoors.com

